

THE CEECR CONSORTIUM NEWSLETTER

November 2023

Cohorts for Environmental Exposures and Cancer Risks

Volume 1, Issue 1



CEECR

Cohorts for Environmental
Exposures and Cancer Risks



DREAM



SOUTHERN
ENVIRONMENTAL
HEALTH STUDY



Funded by the National Cancer Institute (NCI), and the National Institute of
Environmental Health Sciences (NIEHS), NIH, DHHS



National Institutes
of Health

WHAT'S NEW FOR THE CEECR CONSORTIUM?

- The public website is available at <https://ceecr.org/>
- Meet the CEECR Coordinating Center, NCI and NIEHS team on pages 4-5.
- Meet New Members of the Consortium joining STRIVE on page 6.
- Attended the Annual Meeting? Look to page 2 to see how you can provide valuable feedback on your experience.
- Take advantage of our new SharePoint site for Consortium members!
 - To access the CEECR SharePoint, go to <https://ceecr.org> and in the upper right-hand corner click 'login to SharePoint' using your institution's work email address and password. If you have trouble logging into the site, contact the Coordinating Center at ceecrcc@uwcarbone.wisc.edu for assistance. Only CEECR consortium members have access to the CEECR SharePoint.

CEECR: The New Cohorts for Environmental Exposures and Cancer Risk is a collaborative effort co-funded by the National Institute of environmental Health Sciences (NIEHS) and the National Cancer Institute (NCI). CEECR aims to support innovative scientific research in new prospective cohorts that address knowledge gaps in cancer etiology and carcinogenesis processes with a focus on environmental exposures.



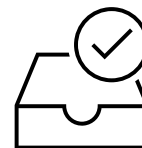
Overall CEECR Consortium Goal

To address gaps in knowledge and build upon emerging findings related to environmental exposures and lifestyle, behavioral, genomic, or other factors that modify the impact of exposures on cancer risk by establishing new cohorts, especially in understudied and underserved populations.



The CEECR Consortium is made up of five new prospective cohorts, a Coordinating Center, and the NIH. Members from the NIH serve as Project Directors for each of the new prospective cohorts and they work with the Coordinating Center to further the mission and aims of CEECR. The five new prospective cohorts are interested in diverse study populations representative of various regions throughout the United States.

Coordinating Center Updates



CEECR SharePoint Update

- The Coordinating Center has phased out NCI Hub and Box for the Consortium and has transitioned over to a Microsoft SharePoint site <https://uwprod.sharepoint.com/sites/CEECRConsortium>
- Former Coordinating Center MPI Betsy Rolland has accepted a position outside of UW-Madison. We wish Betsy success in her new position!

2nd Annual Meeting

- Thank you to all who joined us in-person and virtually at the Annual Meeting for the CEECR Consortium! We would love to hear your feedback to run more effective meetings in the future that benefit everyone. Please use [this link](https://uwmadison.co1.qualtrics.com/jfe/form/SV_5AppOSGLCV7CA2G) to fill out an anonymous evaluation form.
 - Links to: https://uwmadison.co1.qualtrics.com/jfe/form/SV_5AppOSGLCV7CA2G

CEECE CONSORTIUM COLLABORATION AND HARMONIZATION

Harmonization Working Group

Core data elements for the consortium

In our last meeting in October, we reviewed items to be considered in cohort questionnaires to prioritize exposures of interest for CEECE. Some discussion emphasized other tobacco alternatives and the importance of pack years. We also considered Multiethnic Cohort questions for additional diet questions that may be of interest. Our top priority is making sure that all cohorts can collaborate on a set of demographic variables.

Recruitment and Retention Working Group

Sharing best practices, successes, and challenges

Last meeting, we discussed Infographics Work:

STRIVE: Cadmium exposure infographic developed with the community engagement core for the P30 center.

SEHS: Interests and consideration of infographic usage.

10FKS: Infographics targeted for recruitment but planning development for exposures in the future.

MI-CARES: Infographics on cancer facts or fiction, exposures, and screening in collaboration with internal resources and external partners.

DREAM: Two infographics on toxic matters and how to avoid toxic chemicals during pregnancy. Efforts utilized community partnerships to develop proper language.

Wristbands and Biospecimens

Collaboration on plans for analysis and preparing for common assay work

Listed are links to recently published work regarding the use of wristbands to assess environmental exposures.

["A feasibility study of exposure to environmental chemicals among Black and Hispanic breast cancer survivors..."](#)

["Environmental pollutants in children"](#)

["Comparative assessment of chemical exposures using different wearable form factors"](#)

["Methodological challenges in spatial and contextual exposome-health studies"](#)

["Chemical contaminant exposures assessed..... among fuel station attendants, taxi drivers.... in Kampala, Uganda"](#)

Steering Committee

Guiding the direction of the consortium

Our Steering Committee got to meet in-person at our Annual Meeting this November. Our priority areas were identified to be:

- › Having a shared space for communication
- › Harmonize biomarker exposures and outcomes
- › Harmonize questionnaire items
- › Report Backs
- › Harmonize geospatial analysis
- › Data sharing

The Coordinating Center is looking to schedule Cohort Check-Ins during 2024 to catch up with everyone. Also, please keep an eye on our SharePoint website where we will trial run our communications before exploring other options.

COORDINATING CENTER CORNER

The CEECR Coordinating Center is here for you!



Amy Trentham-Dietz, PhD, MS
Cancer Epidemiologist
trentham@wisc.edu



Kristen Malecki, PhD, MPH
Environmental Epidemiologist
kmalecki@uic.edu



Julie McGregor
Research Administration
jmcgregor@wisc.edu



Hannah Johnson, MPH
Public Health Policy and Management
hkjohnson2@wisc.edu



Shaneda Warren Andersen, PhD, MS
Cancer Epidemiologist
snandersen@wisc.edu



Ronald Gangnon, PhD
Biostatistician
ronald@biostat.wisc.edu



Chris Bradfield, PhD
Environmental Toxicologist
bradfield@oncology.wisc.edu



John Hampton, MS
Biostatistician
john.hampton@wisc.edu



Saiju Pyarajan, PhD
Data Scientist
pyarajan@wisc.edu

Our multidisciplinary team includes experts in breast cancer epidemiology (Trentham-Dietz), basic science including genetics (Bradfield), environmental health and applied public health (Malecki), toxicology (Bradfield), program evaluation, biostatistics (Gangnon, Hampton), and outreach/community engagement (Malecki, Warren Andersen), as well as mentoring and training (all) and research administration and logistical support (McGregor, Johnson).

The CEECR public website is www.ceecr.org

We continue to update our website as the CEECR program progresses. To be featured, please send any consortium updates, suggestions, pictures, or other cohort activities to Hannah Johnson at hkjohnson2@wisc.edu

Link to the CEECR SharePoint site:

<https://uwprod.sharepoint.com/sites/CEECRConsortium>

For any assistance with the site, including but not limited to account or password reset, registration, navigating the portal, and addition of resources and links, please contact Hannah or Julie



**SAVE
THE
DATE**



Harmonization Working Group
TBD

Recruitment and Retention Working Group
December 14, 2023 at 2pm EST

Steering Committee

First Monday of each month at 2pm EST, meeting moves to second Monday when a holiday falls on the first Monday
December 4, 2023 at 2pm EST

NCI and NIEHS Team



Somdat Mahabir, PhD, MPH

NCI Lead, Program Director
Environmental Epidemiology Branch
Epidemiology and Genomics Research Program, NCI



Curt DellaValle, PhD, MPH

Program Director
Environmental Epidemiology Branch
Epidemiology and Genomics Research Program, NCI



Tram Kim Lam, PhD, MPH

Branch Chief
Environmental Epidemiology Branch
Epidemiology and Genomics Research Program, NCI



Abee Boyles, PhD

Program Director
Population Health Branch
Division of Extramural Research and Training, NIEHS



Behnoosh Momin, DrPH, MS, MPH

Program Director
Environmental Epidemiology Branch
Epidemiology and Genomics Research Program, NCI



Melanie Sandquist, MPH

Cancer Research Training Award Fellow
Environmental Epidemiology Branch
Epidemiology and Genomics Research Program, NCI

Meet the Consortium

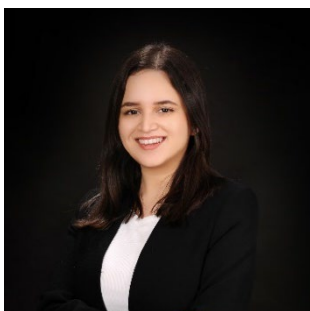


Mia Delano, MPH

Mia Delano was born and raised in the foothills of the Rocky Mountains in Colorado Springs, CO. She has an MPH from the University of Michigan School of Public Health. In fact, she thanks Dr. Pearce, Dr. Colacino, and Dr. Dolinoy for their instruction and mentorship throughout her time at UMSPH! After working as an epidemiologist during the COVID-19 pandemic in her home state, Mia has joined the Southern Environmental Health Study team as a Program Manager.

Welcome, Jana Phillips and Rachel Maguire!

Jana will be the new Project Manager at STRIVE and Rachel will be their new Research Manager.



Sobia Siddiqui, MD Hi, my name is Sobia Siddiqui. I recently graduated from medical school at the Aga Khan University in Karachi, Pakistan, which is also the city where I was born and raised. I have a passion for the outdoors, particularly hiking, which helps me unwind and find inspiration. I enjoy quality time with my family, often through board game nights. I recently joined VUMC as a postdoctoral research fellow in the department of Epidemiology. I am a member of the SEHS and eagerly look forward to engaging in collaborative initiatives within the group.



Maxwell Salvatore, MPH My thesis looks at using electronic health record data for cancer risk protection. Within the MI-CARES team I've been involved in data management, community engagement, and recruitment. Additionally, I'm doing outreach in the Flint region. As a large, long-term cohort, MI-CARES is uniquely positioned to answer questions about adverse exposures and their impacts on cancer. I'm excited about the potential for results from MI-CARES to change policy and improve health.



Lilah Khoja, MPH My thesis looks at cancer prevention in hard to reach groups. Within the MI-CARES team, I work on fostering community engagement and recruitment, with a focus on the Middle Eastern and North African (MENA) communities. The impact of MI-CARES cannot be overstated – the data that we are gathering will help us answer crucial questions about the environment and our health, which will hopefully lead to necessary policy change to secure a healthy future for us all.

New Publications / Presentations / Resources

Publications: Congrats to Peggy, Tracy, Justin and to Debra on their recent publications listing CEECR grant funding!

- Cathey AL, Nguyen VK, Colacino JA, Woodruff TJ, Reynolds P, Aung MT. Exploratory profiles of phenols, parabens, and per- and poly-fluoroalkyl substances among NHANES study participants in association with previous cancer diagnoses. J Expo Sci Environ Epidemiol. 2023 Sep; 33(5):687-698
- Goodman RS, Patrinely JR, Stone CA Jr, Zimmerman E, Donald RR, Chang SS, Berkowitz ST, Finn AP, Jahangir E, Scoville EA, Reese TS, Friedman DL, Bastarache JA, van der Heijden YF, Wright JJ, Ye F, Carter N, Alexander MR, Choe JH, Chastain CA, Zic JA, Horst SN, Turker I, Agarwal R, Osmundson E, Idrees K, Kiernan CM, Padmanabhan C, Bailey CE, Schlegel CE, Chambless LB, Gibson MK, Osterman TJ, Wheless LE, Johnson DB. Accuracy and Reliability of Chatbot Responses to Physician Questions. JAMA Netw Open. 2023 Oct 2;6(10):e2336483.

Presentations:

- Shameda from the Coordinating Center presented on the CEECR cohorts at the American Association for Cancer Research's Annual Meeting in Orlando, FL this past April
- Lilah Khoja from the MI-CARES team presented on the establishment of the MI-CARES cohort study at the Society for Epidemiologic Research conference this past June

Resources:

- SEHS has created a new brochure, recruitment video, and wristband videos for their social media.

Other Announcements

Professional Development

Open Position:

Assistant Professor in Cancer Epidemiology at the University of Minnesota-Twin Cities

More information [here](#).

Links to <https://hr.myu.umn.edu/jobs/ext/357460>



Open Position:

Assistant or Associate Professor in Cancer Epidemiology at the University of Wisconsin-Madison

More information [here](#).

Links to <https://jobs.wisc.edu/jobs/assistant-or-associate-professor-cancer-epidemiologist-madison-wisconsin-united-states-a4e600a2-9f60-44dc-8f46-b7865c3560cc>



Open Position:

Postdoctoral Research Associate Position Announcement at the University of Illinois Chicago School of Public Health

More information [here](#).

Links to <https://uic.csod.com/ux/ats/careersite/1/home/requisition/7698?c=uic>



CEECR in the Community

10KFS: The 10KFS study has generated education materials in English and Spanish related to environmental exposures (PFAS and radon) and other health topics (COVID, health disparities, mental health). These events are recorded and available on the 10KFS YouTube channel (linked here: <https://www.youtube.com/@tenkfsuniversityofminnesot451>).

SEHS: In the past year, the SEHS team has been to more than 58 events in their communities reaching over 6000 attendees! Martha Shrubsole from SEHS gave a talk last December at Vanderbilt-Ingram Cancer Center! You can check it out on YouTube here: [Today's Discoveries, Tomorrow's Hope: Cancer Epidemiology](#)

MICARES: The MICARES team is sending out a Bulletin with information about their study and environmental exposures and cancer. MI-CARES also launched a new webinar series this past year where they've discussed several environmental exposure and cancer topics including colon cancer rates rising in young adults and microplastics in our bloodstream!

STRIVE: Linda from the STRIVE study has been successful in leading their recruitment efforts by identifying leaders in the community that can connect with participants.

Want to highlight your Cohort's work in the community? Please email Hannah at hkjohnson2@wisc.edu in order to get your group's efforts recognized for all they do!

Photo Gallery



Clemen Wilcox & Andrea Hickle (10KFS),
Kelly Kunkel & Trina Adler (UMN Extension) -
from FarmFest 2023



Andrea Hickle, Theo Slaven, Morgan
McBride, Omotola Adenusi (10KFS) -
from the MN State Fair 2023



Site visit to the first community health center to join the SEHS, East Arkansas Family Health Center (EAFHC). Dr. Wei Zheng, (MPI) and Dr. Martha Shrubsole (MPI) with SEHS staff and the EAFHC team. 2023



Site visit to the second community health center to join the SEHS, Franklin Primary Health Center. Dr. Wei Zheng, (MPI), Dr. Martha Shrubsole (MPI), and Mia Delano (SEHS admin), and SEHS staff with the FPHC team.



Community outreach events hosted by East Arkansas Family Health Center. Linda Clemons (pictured above) is a Patient Care Coordinator/Clinical Health Coach with EAFHC. She has recruited for the SEHS within the health center, at food banks, within churches, and at many other community events.



MI-CARES Team in the Community

We were so excited to be able to meet in-person for the first time this November!

