

THE CEECR CONSORTIUM NEWSLETTER

Fall 2024

Volume 2, Issue 1



SOUTHERN
ENVIRONMENTAL
HEALTH STUDY



Funded by the National Cancer Institute (NCI), and the National Institute of Environmental Health Sciences (NIEHS), NIH, DHHS



Inside this issue...

| | |
|---|-----|
| Coordinating Center Updates | 2 |
| CEECCR in the Community | 3-4 |
| Publications and Resources | 5 |
| Working Groups | 6 |
| Meet the Consortium & CC Resources | 7 |
| NCI and NIEHS team & New Strategic Plan | 8 |
| Coordinating Center Corner | 9 |

CEECCR: The New Cohorts for Environmental Exposures and Cancer Risk

is a collaborative effort co-funded by the National Cancer Institute (NCI) and the National Institute of Environmental Health Sciences (NIEHS). CEECCR aims to support innovative scientific research in new prospective cohorts that address knowledge gaps in cancer etiology and carcinogenesis processes with a focus on environmental exposures.



Coordinating Center Updates



Monthly Funding Digests

Keep an eye on your inbox! The Coordinating Center is sending a funding digest each month which includes current award opportunities that may support your research.

Annual Meeting

Thank you all for attending the Annual Meeting! A special shout out goes to the members of our Planning Committee members:

- Lisa Peterson
- Cathrine Hoyo
- Abee Boyles
- Julie McGregor
- Leigh Pearce
- Somdat Mahabir
- Amy Trentham-Dietz
- Hannah Johnson
- Martha Shrubshole
- Bess Smith
- Kristen Malecki

Save The Dates:

Steering Committee

First Monday of each month at 2pm EST
December 2, 2024 at 2pm EST

Wristband Working Group

December 12, 2024 4pm EST

Recruitment and Retention Working Group

January 22, 2025 at 3pm EST



Team photo of the CEECR Annual Meeting at NIEHS in Durham, North Carolina

CEECR in the Community

SEHS:

On June 8, 2024, the Southern Environmental Health Study was featured at the Tyronza, Arkansas Stars and Stripes Festival. Advertising and recruitment took place in partnership with a Community Advisory Board member and partners from East Arkansas Family Health Center (EAFHC). Pictured on the right, from left to right, EAFHC staff member, Linda Clemons (EAFHC SEHS recruiter), Candace Wong (SEHS CAB member), Talisha Woodard (SEHS recruiter).

SEHS was also featured at a few health fairs and community outreach events so far in 2024. These events include: The TN Health Disparities Advisory Group (April 11), Rotary Club of Franklin (June 26), Let's Talk About Cancer (June 26), Fisk Food & Jazz Music Festival (June 29).

At our Annual Meeting, Carolyn Akakpo, CEO of Family Health Centers, spoke about her work in a not-for-profit that provides primary and preventative health care to the most underserved populations.

STRIVE:

The STRIVE Study has done events in Raleigh, Durham, Chapel-Hill, Pamlico County, and Greenville, North Carolina! The field team has so much fun attending these events and meeting community members while the lab works hard to ensure all samples are processed in a timely manner.

The STRIVE Study has sent report back letters to participants, explaining what their blood PFAS levels mean, and what they can do about these results.

The team is planning report back sessions, where participants can ask questions and get more information.



SEHS at the Stars and Stripes Festival. Left to right: Linda Clemons, Candace Wong, Talisha Woodard.



Carolyn Akakpo Presenting at the Annual Meeting.



STRIVE Research assistants Mya Blue, Sara Nelson, and Sandra Yachi (left to right) attending an event at the Carriage House, an extension of the Raleigh Housing Authority.



STRIVE Lab technician Shaunacee Howell works hard to process samples following an event in Greenville, NC.

CEECR in the Community

10KFS:

10KFS has been represented in many community health events! Most recently, the study team had a booth at the Old Town Mankato Day of the Dead celebration on October 26. They were also represented with another booth at the Hubbard County Free Community Health Fair on October 22. They also held a promotional booth at the University of Minnesota Urban Research and Outreach-Engagement Center on October 17. 10KFS was also present at the Sabathani Health Fair, Neighborhood House, Fiesta Latina, the Minnesota State Fair, the Youth Sports Festival, and the Douglas County Fair among other appearances.

10KFS also did a tailgate experience prior to the Minnesota Gophers' home opener football game.



10KFS at the Fiesta Latina.

MI-CARES:

On September 26th and October 29th, MI-CARES hosted webinars with experts on specific environmental exposures which can be found linked on the following page.

Leigh Pearce was featured on a panel at the 17th AACR Conference on the Science of Cancer Health Disparities in Racial/Ethnic Minorities and the Medically Underserved that took place September 21-24. At our Annual Meeting, Justin Colacino from MI-CARES spoke with community advocate, Adam Frazier, from Kalamazoo Parents for Clean Air about monitoring and addressing air pollution in Kalamazoo MI.



10KFS at the Hubbard County



Adam Frazier and Justin Colacino's presentation at the Annual Meeting.



CEECR members attending the 17th AACR Conference in California. Pictured: Leigh Pearce, far right (MI-CARES). Also in attendance: Tram Kim Lam and Amy Trentham-Dietz.

We want to hear about what your team is doing in the community! Please share updates with Hannah at hkjohnson2@wisc.edu to be featured in the newsletter.

New Publications / Presentations / Resources

Publications:

- ⇒ Congrats to Bhramar from MI-CARES on [their publication](#) listing CEECR grant funding!
Salvatore M, Kundu R, Shi X, et al. To weight or not to weight? Studying the effect of selection bias in three large EHR-linked biobanks. Preprint. medRxiv. 2024;2024.02.12.24302710. Published 2024 Feb 13.
doi:10.1101/2024.02.12.24302710
- ⇒ Congrats to Heather Nelson and Jenny Poynter from 10KFS on [their publication](#) listing CEECR grant funding!
Sharma S, Prizment A, Nelson H, et al. Association between Accelerated Biological Aging, Diet, and Gut Microbiome. Microorganisms. 2024;12(8):1719. Published 2024 Aug 20.
doi:10.3390/microorganisms12081719
- ⇒ Congrats to Justin Colacino from MI-CARES on [their publication](#) listing CEECR grant funding!
Nguyen VK, Zimmerman S, Colacino J, Jolliet O, Patel CJ. Body dissatisfaction widens the racial disparities of Benzophenone-3, a chemical biomarker of personal care and consumer product usage. Preprint. medRxiv. 2024;2024.08.26.24312258. Published 2024 Aug 26. doi:10.1101/2024.08.26.24312258



Jen Poynter presenting to Mujeres Latinas Unidad during their meeting.

Presentations:

- SEHS presented at the Addressing Cancer Control and Care in Rural Communities Conference. They were also featured in the Vanderbilt Ingram Cancer Center article titled [Powerful Collaboration](#).
- Justin Colacino from MI-CARES was hosted by Population Healthy in a [podcast](#) on the environmental justice and cancer risk.
- Clemen Wilcox from 10KFS was hosted on “The Community Voice” by [Radio Jornalera](#), a Latin American radio station, to discuss the dangers of radon.
- 10KFS hosted Mujeres Latinas Unidad at the 10KFS offices and presented their study's work.

Resources:

- MI-CARES has been consistently adding to their webinar series! This past September, they hosted a researcher from the NCI to discuss in a [webinar](#) titled: “Pesticide use, indoor residential exposures, and childhood cancer”. They also most recently included a [webinar](#) on vaping to their webinar series titled: “So, what’s up with vaping? Is it less, the same, or more harmful than smoking?”
- The SEHS team published their [2024 Newsletter](#).



“Pesticide use, indoor residential exposures, and childhood cancer”

Join us for a MI-CARES webinar with
Jessica Madrigal, PhD, MS
Independent Research Scholar,
National Cancer Institute

Thursday, September 26 • Noon – 1:00 pm
Registration is required!
<https://myumi.ch/mZ3zj>



MI-CARES
UNDERSTANDING THE IMPACT OF OUR ENVIRONMENT
<https://micares.health>



MI-CARES webinar with Dr. Jessica Madrigal from the NCI.



Header from the 2024 SEHS Newsletter. The publication features an overview of the study, information for participants, and even a refreshing recipe at the end!

CEECR Consortium Collaboration and Harmonization

Harmonization Working Group

Core data elements for the consortium

- The CEECR consortium is preparing for future data sharing and collaborations both within and outside of the CEECR cohort studies
- We are planning to use the OMOP* Common Data Model (CDM). Our goals for OMOP:
 - Create harmonized datasets using CEECR cohort data (questionnaire and linked data)
 - Manage a combined file that includes IDs linking CEECR data to OMOP
 - Analyze and report collective CEECR characteristics and outcomes

*OMOP stands for Observational Medical Outcomes Partnership. The OMOP CDM is used by researchers to create a standard for how they can organize their data to help share it with other researchers.

Recruitment and Retention Working Group

Sharing best practices, successes and challenges

- At the Annual Meeting this year, we heard from Lauren McCullough, PhD, MSPH on her work with the VOICES of Black Women study where she serves as a Co-Principal Investigator. We also got to hear from Alexandra (Lexie) White, PhD, MSPH on her work with the Sisters Study.
- Lauren emphasized how representation matters in communications with participants. It is important to pick up the phone, answer emails, and receive and respond to all feedback.
- Lexie shared how retention efforts are based on maintaining trust, building rapport, providing accommodations and flexibility, and forming lasting partnerships between study staff and participants.

Geospatial Working Group

Creating a geospatial protocol for the consortium

Collaborative Project: Integrating air quality and contextual Social Determinants of Health (SDOH) in relation to accelerated biological aging.

- In the past few meetings, we have been developing a plan for a collaborative CEECR project using geospatial analysis tools and each site's cohort data collected so far.
- The goal of this project is to understand how participants across CEECR are impacted by where they live in terms of their physical built environment, social networks, and other environmental factors that may impact their health.
- The Steering Committee will review the Geospatial Working Groups plans for this collaborative paper in December.
- The next general plan for the cohorts is to:
 - ⇒ Geocode their participant addresses to a point location in the US using a geospatial analysis tool and then use those geocodes to match participants to exposure measures like air pollution and combined measurements for social determinants of health.

Wristbands and Biospecimens

Collaboration on plans for analysis and preparing for common assay work

- The CC is planning a cross-cohort collaboration project using wristband samples.
- Each site will use sections from their wristbands using a similar procedure for processing them in their labs.
- Labs at Duke University and at Emory University will then study the wristbands to see if they get similar results from the bands
 - ⇒ Doing this testing at each lab will allow the CEECR team to see if there are differences in what chemicals we find on the wristbands based on how each lab analyzes and prepares the wristband samples.

Steering Committee

Guiding the direction of the consortium

- Each cohort is celebrating success with engaging communities and collaborating with community partners!
- At our next meeting, we will vote on the Data Sharing Policy revisions discussed in October, and elect a new Steering Committee Chair.
- The Steering Committee has worked hard since the Spring to further the collaborative efforts of CEECR with establishing the wristband project and geospatial SDOH and air quality project.
- A big thank you and shout out to Martha Shrubsole from SEHS for being our Steering Committee Chair for 2024!

Meet the Consortium

Angelica Trevino Orozco, IMD, CRC (10KFS)



I was born on a small island in the South of Mexico. Obtained my Medical Doctor degree in Mexico and worked as a General Physician before moving to Texas where I worked as a Clinical Research Coordinator and now moved to the Twin Cities where I'm excited to be working as a Research Study Coordinator in the Cohort study called the 10,000 Families Study. My job is to help in all aspects of the study, from going to Outreach events all over Minnesota and telling families what the study is about to supervising those families' Health Visits and making sure they run smoothly. I also clear all questions these families might have, either in English or Spanish, about the study process and make sure that they understand what Research is really about and why we are doing the 10,000 Families Study.

My hobbies are hiking, video games and, ever since moving to Minnesota, I'm an "Aurora Borealis Chaser" enthusiast and love watching them when possible.

Coordinating Center Resources

Lay Abstracts:

- The CC is continuing to create lay abstracts for publications citing CEECR funding, and they will be posted to the CEECR website [here](#) upon author approval.
- Recent lay abstract titles:
 - Association between Accelerated Biological Aging, Diet, and Gut Microbiome
 - To weight or not to weight? The effect of selection bias in 3 large electronic health record-linked biobanks and recommendations for practice
 - A nested case-control study of untargeted plasma Metabolomics and lung Cancer among never-smoking women within the prospective Shanghai Women's Health Study

Infographics:

- The CC continues to create infographics highlighting relevant topics to the CEECR consortium uploaded [here](#). We work with a communications team at the UW Cancer Center to provide this information to general audiences. Cohorts are welcome to use this resource as a way to communicate with their team and participants.
- Our Infographics have been shared with Wisconsin Community members at local events like the Institute of Aging on campus event and through the School of Medicine and Public Health "TGIF" UW Carbone Cancer Center's weekly [newsletter](#).

The CEECR public website is www.ceecr.org

We continue to update our website and newsletter as the CEECR program progresses. To be featured, please send any consortium updates, suggestions, pictures, or other cohort activities to Hannah Johnson at hkjohnson2@wisc.edu.

Link to the CEECR SharePoint site is [here](#).

For any assistance with the site, including but not limited to account or password reset, registration, navigating the portal, and addition of resources and links, please contact Hannah or Julie.

NCI and NIEHS Team



Somdat Mahabir, PhD, MPH

NCI Lead, Program Director
Environmental Epidemiology Branch
Epidemiology and Genomics Research Program, NCI



Curt DellaValle, PhD, MPH

Program Director
Environmental Epidemiology Branch
Epidemiology and Genomics Research Program, NCI



Tram Kim Lam, PhD, MPH

Branch Chief
Environmental Epidemiology Branch
Epidemiology and Genomics Research Program, NCI



Abee Boyles, PhD

Program Director
Population Health Branch
Division of Extramural Research and Training, NIEHS



Behnoosh Momin, DrPH, MS, MPH

Program Director
Environmental Epidemiology Branch
Epidemiology and Genomics Research Program, NCI

New NIEHS Strategic Plan

Solutions-focused research with an emphasis on diversity underpins bold vision to understand environment's effects, improve human health.

[The plan](#) is structured around two key themes: solutions-focused research and diversity, equity, inclusion, accessibility, and civility (DEIAC). NIEHS Director Rick Woychik stressed the importance of translational research that impacts public health and outlined six research focus areas, each with specific goals:

1. **Exposomics:** Investigating how positive and negative environmental effects interact and affect health.
2. **Precision Environmental Health:** Enhancing understanding and communication of environmental risks based on individual susceptibilities.
3. **Mechanistic Biology and Toxicology:** Exploring biological impacts of environmental exposures.
4. **Data Science and Computational Biology:** Identifying complex relationships between environmental and health.
5. **Environmental Health Disparities and Justice:** Addressing environmental health disparities to promote equity.
6. **Climate Change and Health:** Researching and mitigating climate change's health impacts.

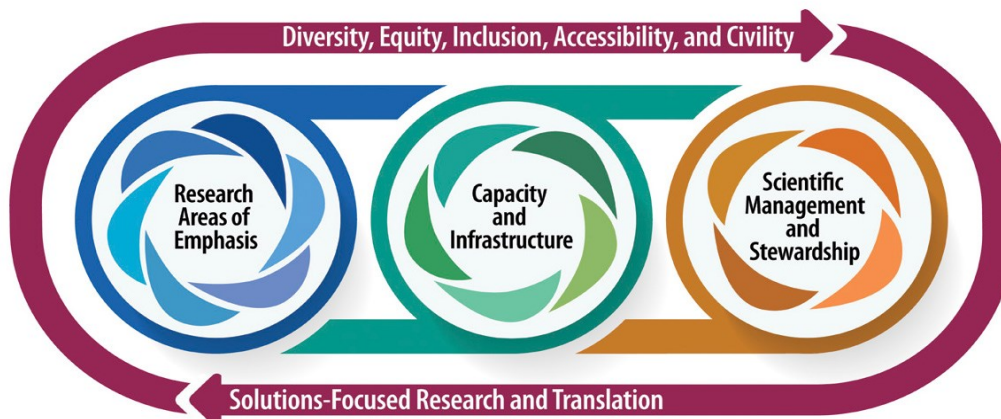


Image courtesy of NIEHS

COORDINATING CENTER CORNER

The CEECR Coordinating Center is here for you!

Our multidisciplinary team includes experts in breast cancer epidemiology (Trentham-Dietz), basic science including genetics (Bradfield), environmental health and applied public health (Malecki), toxicology (Bradfield), program evaluation, biostatistics (Gangnon, Hampton, Arroyo), and outreach/community engagement (Malecki, Warren Andersen), as well as mentoring and training (all) and research administration and logistical support (McGregor, Johnson, Wiesner).



Amy Trentham-Dietz, PhD, MS
Cancer Epidemiologist
trentham@wisc.edu

- Oversight for the CC and Steering Committee Representative
- Identifying common data elements to guide harmonization
- NCI Point of Contact



Kristen Malecki, PhD, MPH
Environmental Epidemiologist
kmalecki@uic.edu

- Assists in identifying common data elements of early biomarkers
- Facilitates the Recruitment and Retention working group
- Supports resource sharing and manuscript publication



Julie McGregor
Research Administration
jmcgregor@wisc.edu

- Overall coordination of timelines, deliverables, dissemination, and the annual meeting
- NCI Point of Contact
- IRB, DUA, MTA



Hannah Johnson, MPH
Public Health Policy & Management
hkjohnson2@wisc.edu

- Assists with identifying common data elements
- Maintains communications and contacts
- Coordinates meetings, manuscripts, and stakeholder engagement



Shaneda Warren Andersen, PhD, MS
Cancer Epidemiologist
snandersen@wisc.edu

- Assists with identifying common data elements of cancer risk factors, resource sharing and manuscripts
- Community outreach and stakeholder engagement
- Health Equity Experience



Ronald Gangnon, PhD
Biostatistician
ronald@biostat.wisc.edu

- FAIR data sharing practices and external PIs access to CEECR data
- Guidance on statistical methodologies and analyses, and support of manuscripts and resource sharing



Chris Bradfield, PhD
Environmental Toxicologist
bradfield@oncology.wisc.edu

- Support for biospecimen best practices and manuscript publication



John Hampton, MS
Biostatistician
john.hampton@wisc.edu

- Supports data management and sharing between PIs
- Designs data entry, tracking, and standardization
- Submission of CEECR data to NIH



Natalia Arroyo, MPH
Data Scientist
narroyo@wisc.edu

- Observational Medical Outcomes Partnership (OMOP) data sharing and harmonization
- Co-lead cross-network data analysis projects
- Assists with Geospatial Working Group and manuscripts



Katie Wiesner
Project Assistant
kkwiesner@wisc.edu

- Supports meeting logistics, newsletters, literature reviews, data collection, and analysis.
- Assists with dissemination of research activities and findings.