

THE CEECR CONSORTIUM NEWSLETTER

Spring 2025

Volume 2, Issue 2



SOUTHERN
ENVIRONMENTAL
HEALTH STUDY



Funded by the National Cancer Institute (NCI), and the National Institute of Environmental Health Sciences (NIEHS), NIH, DHHS



Inside this issue...

Coordinating Center and Recruitment Updates	2
CEECCR in the Community	3-4
Research Spotlight	5
New to the Consortium, Publication Resources	6
Resources, Presentations, Webinars	7
Working Group Updates	8
NCI and NIEHS Team	9
Coordinating Center Corner	10

CEECCR: The New Cohorts for Environmental Exposures and Cancer

Risk is a collaborative effort co-funded by the National Cancer Institute (NCI) and the National Institute of Environmental Health Sciences (NIEHS). CEECCR aims to support innovative scientific research in new prospective cohorts that address knowledge gaps in cancer etiology and carcinogenesis processes with a focus on environmental exposures.



Annual Meeting—

Save the Date! Our CEECR

Annual Meeting this year will take place December 4th and 5th, 2025 at the University of

Michigan in

Ann Arbor.

Details and registration information coming soon! Since

our last annual meeting, we have been exploring harmonization projects to highlight our coordination efforts across the consortium.



Coordinating Center Updates



Enrollment Tracking

The Coordinating Center is consolidating enrollment numbers across the consortium on a monthly basis. Learn more about who is in CEECR as of April 2025 in the infographic below.

Monthly Literature Reviews and Funding Digests

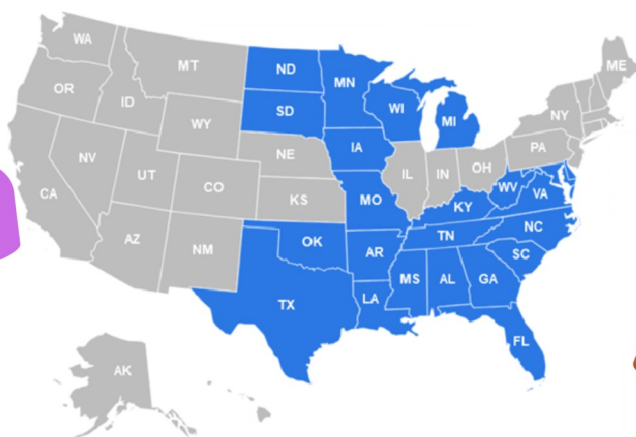
Keep an eye on your inbox! The Coordinating Center (CC) sends out a funding digest each month which includes current award opportunities that may support your research. The CC team also prepares a monthly literature review on topics relevant to CEECR like PFAS and cancer risk, measuring the exposome, pesticides and cancer risk, environmental exposures and cancer, and more.

Find CEECR on Facebook and Online

The [CC Facebook page](#) is now live! The Coordinating Center Facebook page will routinely share posts from the CEECR cohorts highlighting their work in the community, events, and research. The CEECR public website is www.ceecr.org. We continue to update our website with resources and updates as the CEECR program progresses. To be featured on our website, please send any consortium updates, suggestions, pictures, or other cohort activities to Hannah Johnson at hkjohnson2@wisc.edu. For CEECR members, the link to our CEECR SharePoint site is [here](#). For any assistance with the site, including but not limited to account or password reset, registration, navigating the portal, and addition of resources and links, please contact Hannah or Julie at the Coordinating Center.



Who is in the new Cohorts for Environmental Exposures and Cancer Risk (CEECR)?



Are you interested in learning more about which cohort is studying environmental exposures and cancer risk in your state? Check out our website to learn more about each of the CEECR cohorts by scanning the QR code below!



27% of participants identify as men



63% of participants are <50 years



83% of participants come from metro counties

Over 33,500 participants joined between December 2021 and May 2025

CEECR in the Community

MI-CARES—The Michigan Cancer and Research on the Environment Study

- Congrats to MI-CARES for securing the add-on grant: "Feasibility Study to Assess Unusual Cancer Patterns in Flint, Michigan"!
- On January 31, 2025, MI-CARES attended the Canton Town Center recruitment event, where they spoke to residents of Canton about environmental pollutants and cancer research to provide information to the public and enhance participant recruitment in MI-CARES.
- On February 22, 2025, the Detroit Book City's Annual African American Family book expo engagement and recruitment event was held in Highland Park in the City of Detroit— attracting many students and their families to the MI-CARES table. The mayor of Highland Park visited the table and showed interest in showcasing MI-CARES at the city town hall.
- Also in February, MI-CARES attended the Mid-Michigan Women's Expo in Lansing, which focused on recruitment and educating community on MI-CARES research findings so far. This event included socializing, shopping, and health and wellness opportunities for the women in the city of Lansing. In March, MI-CARES also attended the "One Day Closer" event hosted by the Rogel Cancer Center for youth education. This was a community outreach event to educate youth and students on cancer research through interactive activities.
- In March, MI-CARES attended the Monroe County Earth Day Expo 2025 Earth Day event where they provided cancer prevention information. Lastly, MI-CARES is highlighting their joint partnership with RedCross Blood drive. This effort focused on recruitment by partnering with RedCross blood drive to gather participants.



Canton Town Center Recruitment event



Detroit Book City's Annual African American Family book expo



Leigh Pearce addresses the audience at the One Day Closer event hosted by the Rogel Cancer Center for youth education Community



Monroe County Earth Day

STRIVE—The Southern Liver Health Study

- The NCSU STRIVE site recently partnered with a company called [CliniContact](#) to increase their recruitment of rural research participants via online advertisements and social media.
- In March, STRIVE team members from Duke set up a table at the [CRUSH Colorectal Cancer 5K](#) to talk about the STRIVE study and recruit participants. The CRUSH Colorectal Cancer 5K raises vital community awareness and funds for colorectal cancer research at the Duke Cancer Institute.
- The STRIVE team is working on a report back session for their study participants to talk about what they have learned so far about PFAS and metals in STRIVE.



The NCSU STRIVE team at a sample collection and recruitment event at NCSU



The Duke STRIVE Team at the CRUSH Colorectal Cancer 5k on March 22, 2025.

CEECR in the Community

10KFS—The 10,000 Families Study

- The 10KFS team is pleased to share their recent successes, which they have been showcasing at several events, receiving excellent feedback and community engagement! Dr. Jen Poynter and Dr. Heather Nelson discussed the importance of family participation in the 10KFS on the [Minnesota](#)



Community Connections on Feb 8th

[Masonic Histories and Mysteries](#) podcast.

- The 10KFS was featured at the [Eagles 5th District Cancer Telethon](#) in Rochester, MN, on January 18th.
- In February, the 10KFS was highlighted at the Community Connections Conference, where attendees joined the study, explored 100+ booths, and enjoyed a free lunch while strengthening community connections. 10KFS was also featured in the HRA Quarterly Health Equity Forum series on February 21, hosted by the Health Risk Assessment (HRA) Unit at Minnesota Department of Health (MDH), which featured presenters working at the forefront of water contaminant issues in Minnesota and discussing the health equity implications of their work.
- 10KFS was presented at the Financial Health Fair in Burnsville on March 2nd, and participated in the 2025 Health and Wellness Fair in Hibbing, Minnesota, on March 6th.



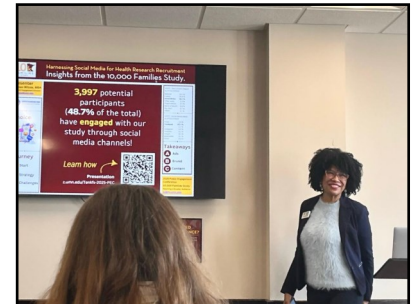
Eagles Telethon on Jan 18th

Connective Thread Art event by [CLUES](#) (Comunidades Latinas Unidas en Servicio) in Saint Paul, MN on March 15th. Then, on March 18th 10KFS presented at the University Public Engagement Conference.

- In April, 10KFS contributed to the Deaf Culture, Language, and Careers event at White Bear Lake High School in MN. Then, on April 25th 10KFS held a Facebook Live session in Spanish.
- 10KFS continues to engage their Community Advisory Board (CAB) with meetings held on Jan 29th and April 23rd.



Financial health fair March 2nd



Public engagement conference presentation by Clemen Wilcox

SEHS—The Southern Environmental Health Study

- SEHS presented a [poster](#) on their cohort and their progress so far at the [Meharry Vanderbilt Tennessee State University Cancer Partnership Symposium](#) on February 8, 2025. The purpose of the Symposium is to eliminate cancer disparities through a proportional approach that brings in basic, translational, clinical, and population science.



Dr. Martha Shrubsole

- SEHS and its community health center partners have participated in several community outreach events such as local fairs, food drives, senior center and community center events, and back to school events.

- Dr. Martha Shrubsole from SEHS gave a community presentation to the Louisville

Metro Public Health and Wellness Department about the SEHS.



Meharry-Vanderbilt-Tennessee State Cancer Partnership Symposium Theme

We want to hear about what your team is doing in the community! Please share updates with Hannah at hkjohnson2@wisc.edu to be featured in our next newsletter.

New CEECR Publications!

See all CEECR publications here!



Household dysfunction ACEs and low income are linked

to higher cirrhosis risk in adults. The STRIVE Team has [published a paper](#) listing CEECR grant funding titled: *Childhood Household Dysfunction and Low Household Income Associate with Increased Risk of Cirrhosis in Adults*. This study re-examined the link between adverse childhood experiences (ACEs) and cirrhosis in adults, in light of the growing prevalence of metabolic dysfunction-associated steatohepatitis (MASH). While total ACE score was not significantly associated with cirrhosis, ACEs related to household dysfunction (HD) were independently linked to higher odds of disease. The impact of ACEs on cirrhosis was especially pronounced among participants with low household income, suggesting that socioeconomic status may amplify the effects of early-life adversity. These findings mark a shift from prior research focused on viral and alcohol-related liver disease, highlighting the evolving mechanisms by which early adversity contributes to liver disease in the modern era.

Citation: Miller, Kaia C et al. "Childhood Household Dysfunction and Low Household Income Associate with Increased Risk of Cirrhosis in Adults." *Clinical gastroenterology and hepatology : the official clinical practice journal of the American Gastroenterological Association*, S1542-3565(25)00251-4. 9 Apr. 2025, doi:10.1016/j.cgh.2025.02.012

Other papers from STRIVE coming soon:

Seo, Bojung et al. "Short-chain per- and polyfluoroalkyl substances associated with elevated alanine aminotransferase: Cross-sectional analysis results from the STRIVE cohort." *Environmental Research*. (Under review)

Smith, Nikia et al. "Associations Between Exposure to Gadolinium and Lead and Chronic Liver Disease among Southern US Adults." *Science of the Total Environment* (Under Review)

Increasing the amount of fiber and decreasing the amount of processed meat in diets influenced biological aging.

Members from the 10KFS team [published a paper](#) that examined factors driving accelerated biological age (BA), an important predictor of chronic diseases. This study focused on the impact of diet and gut microbiome on accelerated BA. Accelerated Klemmera-Doubal biological age (KDM-BA) was estimated as the difference between KDM-BA and chronological age. They assessed the cross-sectional association between accelerated KDM-BA and diet/gut microbiome in 117 adult participants from the 10,000 Families Study. 16S rRNA sequencing was used to estimate the abundances of gut bacterial genera. Multivariable linear mixed models evaluated the associations between accelerated KDM-BA and diet/gut microbiome after adjusting for family relatedness, diet, age, sex, smoking status, alcohol intake, and BMI. One standard deviation (SD) increase in processed meat was associated with a 1.91-year increase in accelerated KDM-BA ($p = 0.04$), while one SD increase in fiber intake was associated with a 0.70-year decrease in accelerated KDM-BA ($p = 0.01$). Accelerated KDM-BA was positively associated with *Streptococcus* and negatively associated with *Subdoligranulum*, unclassified *Bacteroidetes*, and *Burkholderiales*. Adjustment for gut microbiome did not change the association between dietary fiber and accelerated KDM-BA, but the association with processed meat intake became nonsignificant. These cross-sectional associations between higher meat intake, lower fiber intake, and accelerated BA need validation in longitudinal studies.

Citation: Sharma S, Prizment A, Nelson H, Zhang L, Staley C, Poynter JN, Seshadri G, Ellison A, Thyagarajan B. Association between Accelerated Biological Aging, Diet, and Gut Microbiome. *Microorganisms*. 2024 Aug 20;12(8):1719. doi: 10.3390/microorganisms12081719.

ArcGIS and SAS Geocoders perform similarly, but ArcGIS may be better for rural addresses.

The Coordinating Center has [shared a preprint](#) listing CEECR grant funding titled *Comparing Esri ArcGIS and SAS Geocoding Approaches: Test case with 3,238 Wisconsin addresses*. This report compares two geocoding methods, ArcGIS geocoding by Esri and the SAS GEOCODE Procedure, two methods used by the CEECR consortium to link survey data with environmental and socioeconomic exposure data. In a sample of 3,238 Wisconsin addresses, ArcGIS showed slightly higher specificity (97.7%) than SAS (95.9%), but both platforms demonstrated strong agreement at the county, census tract, and block group levels. Correlations for linked exposure measures were very high, with intraclass correlation coefficients of 98% or higher for most environmental and socioeconomic factors. Although SAS may be a convenient and cost-effective option for researchers already using it, both ArcGIS and SAS provide similarly reliable results for most addresses.

Citation: Johnson HK, Hampton JM, Arroyo N, et al. Comparing Esri ArcGIS and SAS Geocoding Approaches: Test case with 3,238 Wisconsin addresses. Preprint. medRxiv. 2025;2025.01.23.25321040. Published 2025 Jan 25. doi:10.1101/2025.01.23.25321040

All papers listing CEECR grant funding are listed on our [website](#)!

Coordinating Center Publication Resources

Infographics:

The CC continues to share and create infographics highlighting relevant topics to the CEECR consortium uploaded [here](#). The CC works with a communications team at the UW Cancer Center to provide this information to general audiences. Cohorts are welcome to use this resource as well as a way to communicate with their team and participants.



See all of our
infographics here!

Lay Abstracts:

The CC is continuing to create lay abstracts for publications citing CEECR funding, and they will be posted to the CEECR website [here](#) upon author approval.



See all of our
lay abstracts here!

New to the Consortium

Meredith Pedde (MI-CARES)

Meredith is an Assistant Research Scientist at the University of Michigan School of Public Health in the Department of Epidemiology and joined the MI-CARES project in April 2025. Meredith completed her MPH and PhD in Epidemiology with a concentration in environmental epidemiology at the University of Michigan School of Public Health. Meredith also has a masters in environmental policy from the University of Michigan's Gerald R. Ford School of Public Policy and worked at the US Environmental Protection Agency for eight years prior to earning her PhD.



Kerry Richards-McCullough (MI-CARES)

Kerry is a new member of the MI-CARES team, joining the project in April 2025 as a Clinical Research Coordinator Lead. Kerry has worked as the Project Director of the Study of Women's Health Across the Nation Study (SWAN) - a longitudinal women's health study approaching 30 years of data collection. In her work with SWAN and other research efforts such as MILES and Michigan Bone Health and Metabolism Study (MBHMS), Kerry has developed a unique perspective and expertise in recruitment, retention, and clinical applications of research. Introduced to research through the UROP program, she received a BS in Movement Science from the University of Michigan and has continued her work in the Department of Epidemiology at the University of Michigan School of Public Health.



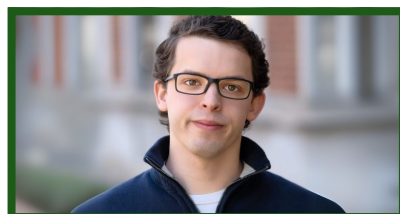
Elizabeth Slocum (MI-CARES)

Elizabeth also joined the MI-CARES project in April 2025 as a research investigator at the University of Michigan School of Public Health in the Department of Epidemiology. Elizabeth completed a PhD in biomedical sciences with a concentration in cancer biology at the Icahn School of Medicine at Mount Sinai and an MPH in epidemiology at the University of Michigan School of Public Health. Elizabeth also completed a training fellowship with the CDC Epidemic Intelligence Service.



Wade Sanders (MI-CARES)

Wade is the Co-Director of the CLASS Lab, and a research investigator in the University of Michigan Department of Epidemiology. His background is in biochemistry, and he holds a doctorate in epidemiological sciences from the University of Michigan. In his role at the CLASS Lab, he works with epidemiological study teams to plan the acquisition, storage, and assay of human biospecimens.



Vanika Chary (10KFS)

Vanika Chary is a [Research Project Manager](#) and a new member of the 10,000 Families Study team at the University of Minnesota Medical School. She brings several years of hands-on research experience, including contributions to the national [All of Us Research Program](#) and the [Prevention of Lower Urinary Tract Symptoms \(PLUS\) Research Consortium](#) at the University of Minnesota. Since early 2025, Vanika has been leading critical efforts in regulatory compliance, developing essential study documents, supporting the Radon Testing Campaign and participant health visits, and driving overall project management. She is passionate about community service and public health, and dedicated to advancing research on cancer causes, genetics, and environmental exposures — helping to create a healthier future for Minnesota families.



Resource Spotlight

Scientific Presentations

MI-CARES also had their ISEE abstract accepted for an oral presentation in Aug 2025 The Michigan Cancer and Research on the Environment Study (MI-CARES): the First 10,000 Participants.

Both **MI-CARES** and **STRIVE** were represented at the February 2025 ToxicoEpigenetics & the Use of piRNA for Precision Environmental Health Research NC State University Seminar Series!

On October 24, the NCI Division of Cancer Epidemiology and Genetics Metabolic Epidemiology Branch Seminar Invited Alison Mondul from **MI-CARES** for the intramural division of the NCI entitled "Michigan Cancer and Research on the Environment Study (MI-CARES): a newly established cohort to investigate environmental causes of cancer"

STRIVE has presented posters at various meetings and conferences since our last issue.

- "Association Between Cirrhosis and Liver Injury and Toxic Metals Exposures." Poster. Nikia Smith. The American Association for the Study of Liver Diseases (AASLD): The Liver Meeting® 2024, San Diego, CA. November 15-19, 2024
- "Development of a Polygenic Risk Score to determine Chronic Liver Disease risk for a multiethnic cohort in the Southern United States." Poster. Nikia Smith. NCSU Genetics, Genomics, and Bioinformatics Symposium, Raleigh, NC. February 28, 2025
- "Soil Metallomics and Association with Hepatocellular Carcinoma." Poster. Urmila Shanmugam. NCSU Undergraduate Research & Creativity Symposium, Raleigh, NC. April 23, 2025.
- "Effects of lead in drinking water on a liver disease diagnosis.." Poster. Erin Walton. NCSU Undergraduate Research & Creativity Symposium, Raleigh, NC. April 23, 2025.
- "Short-chain per- and polyfluoroalkyl substances associate with elevated alanine aminotransferase: Cross-sectional analysis results from the STRIVE cohort." Poster. Bojung Seo. American Association for Cancer Research (AACR) Annual Meeting 2025. Chicago, IL, April 29, 2025.
- "Associations of Short- and Long-Chain Perfluoroalkyl Substances with Hepatic and Metabolic Biomarkers in Adults from the STRIVE Cohort." Poster. Bojung Seo. International Society of Exposure Science and the International Society for Environmental Epidemiology (ISES-ISEE). Atlanta, GA, to be presented August 17-20, 2025.

STRIVE's Nikia Smith has also done a few oral presentations since our last issue.

- "The association between toxic metal exposure, race, gender, and liver enzymes in individuals with nonalcoholic fatty liver disease." Nikia Smith. 36th Annual Conference of the International Society for Environmental Epidemiology. Santiago, Chile, August 25-28, 2024.
- "The association between toxic metal exposure, race, gender, and liver enzymes in individuals with nonalcoholic fatty liver disease." Nikia Smith. Cohorts for Environmental Exposures and Cancer Risks (CEECR) Steering Committee Meeting. Zoom, October 7, 2024.
- "Current Research and the Southern Liver Health Study." Nikia Smith, representing the Department of Biological Sciences. NCSU College of Science Faculty/Staff Meeting. Raleigh, NC, October 17, 2024

Webinars & Other Resources

10KFS released their 10th [newsletter](#) for December 2024 to February 2025. Due to its timing prior to the 2024 winter holiday season, the newsletter features tips for healthy holiday eating, winter outdoor activities, an educational webinar on radon, and a cheesy egg bake recipe!

On April 22, **MI-CARES** was a part of the [#EHWorks Environmental Health Works](#) collaboration with other SPHs on Earth Day, where they launched a video series to explain why their research to uncover environmental threats matters and how to safeguard our health.

MI-CARES continues to expand on their webinar series with a [presentation](#) on HPV vaccination and screening during Cervical Cancer Awareness Month this past January from Dr. Anna Gottschlich, PhD, MPH, and a presentation on "Chemicals in Beauty and Personal Care Products: Emerging Science and Pathways to Action" this past May.



Left: Dana Dolinoy (MI-CARES) and Right: Cathrine Hoyo (STRIVE) at the NC State University Seminar Series





"Cervical cancer: The pathway to elimination"

Join us for a MI-CARES webinar with
Anna Gottschlich, PhD, MPH
Assistant Professor
Karmanos Cancer Institute

Thursday, January 23 • 12:00 - 1:00 pm
Registration is required!
<https://myumi.ch/VGpyq>



MI-CARES
UNDERSTANDING THE IMPACT OF OUR ENVIRONMENT
<https://micares.health>



CEECR Consortium Collaboration and Harmonization

Harmonization Working Group

Core data elements for the consortium

The consortium has made progress in data coordination:

- Developed a questionnaire harmonization grid using surveys from all CEECR cohorts
- Created and refined a “Table 1” summarizing cohort characteristics in the first UG3 phase
- Prioritized key questionnaire domains and finalized a CEECR Collaborative Questionnaire; cohorts can cross-check their instruments for alignment
- Initiated OMOP mapping to standardize CEECR data, modeled after the NCI Connect framework
- Established foundational infrastructure including DTUAs, MTAs, IRB protocols, IRB Reliance Agreements, and the CEECR Data Sharing Policy.
- Set up a secure SharePoint site with cohort questionnaires, literature, and harmonization tools
- Launched Wristband/Biospecimen and Geospatial Working Groups to advance projects



Geospatial Working Group

Creating a geospatial protocol for the consortium

The group is focused on a project that would integrate air quality measures with contextual social determinants of health measures for the CEECR Consortium

What we want to learn from data analysis with NASA air quality data files and CEECR:

- As PM2.5, NO2, and ozone levels change, how does this compare to our CEECR participants? Do we see a greater level of PM2.5 in areas with a greater proportion of lower income and non-white participants, for example.
- Over time, how have PM2.5, NO2, and ozone levels changed throughout the CEECR cohorts?

Wristbands and Biospecimens

Collaboration on plans for analysis and preparing for common assay work

- The group is coordinating a cross-cohort collaboration to study PFAS exposure using biospecimens and silicone wristbands.
- Key methods include targeted LC-MS/MS, Total Oxidizable Precursor (TOP) assays, and high resolution mass spectrometry.
- Early data from the 10KFS and MI-CARES studies suggests strong correlations between some blood and wristband PFAS levels.
- Aim is to understand the transformation processes and inform exposure science and health outcomes across communities

Recruitment and Retention Working Group

Sharing best practices, successes and challenges

- The group is working on creating engaging social media ads, aiming to create more neutral ads that ask for participation in, and focus on the benefits of the cohorts' research.
- Moving forward, the group is looking to reconnect about strategies that have been working for other cohorts in CEECR and how to adopt those for their own studies.
- The group is working on recruitment strategies to engage diverse populations, increasing male participation, and reaching rural populations.

Steering Committee

Guiding the direction of the consortium

- A big thank you to Martha Shrubsole from the SEHS study for serving as the Steering Committee chair in 2024!
- The CEECR cohorts are celebrating accomplishing milestones from the first two years of their studies, the “UG3” phase and moving now in the “UH3” phase of their studies
- Cohorts are focusing their attention on certain populations of interest that they would like to increase representation of in their studies
- The Steering Committee has approved a Data Sharing Policy for CEECR that will help to guide the group on the process for data sharing for CEECR collaborative projects

Mark your Calendars

Steering Committee

First Monday of each month at 2pm EST: June 2, 2025 at 2pm EST

Wristbands and Biospecimen Working Group

Focus on Mixed Methods— Friday, June 20, 2025 10am EST

CEECR Annual Meeting 2025

Thursday, December 4 and Friday, December 5, 2025. Hybrid Meeting to be held at the University of Michigan

NCI and NIEHS Team



Somdat Mahabir, PhD, MPH

NCI Lead, Program Director
Environmental Epidemiology Branch
Epidemiology and Genomics Research Program, NCI



Curt DellaValle, PhD, MPH

Program Director
Environmental Epidemiology Branch
Epidemiology and Genomics Research Program, NCI



Tram Kim Lam, PhD, MPH

Branch Chief
Environmental Epidemiology Branch
Epidemiology and Genomics Research Program, NCI



Abee Boyles, PhD

Program Director
Population Health Branch
Division of Extramural Research and Training, NIEHS



Behnoosh Momin, DrPH, MS, MPH

Program Director
Environmental Epidemiology Branch
Epidemiology and Genomics Research Program, NCI

Save the date for this year's NCI Cohort Consortium Annual Meeting!

- The 2025 NCI Cohort Consortium Annual Meeting will be held on November 3-7, 2025 at the NCI Shady Grove in Rockville, MD and will be in-person/virtual format. There will also be virtual-only project group meetings held during the week of October 31 or as in-person/hybrid meetings between November 3-5.
- Click [here](#) for more information about this year's meeting and the NCI Cohort Consortium.

NCI Cohort Consortium Webinar Series:

- Join the [NCI Cohort Consortium's](#) Associate Member Council for an informal discussion on May 19, 2025 about "Navigating Epidemiology Careers in Academia, Industry, and Government". Hear from distinguished professionals across academia, industry, and government as they share insights into their career journeys. This interactive webinar will include a Q&A session.
- Learn more about the NCI Cohort Consortium Strategic Initiatives [here](#).

The CEECR Cohorts are excited to present at NCI's Environmental Epidemiology and Cancer Webinar Series

Purpose: The Environmental Epidemiology and Cancer [webinar series](#) highlights novel cancer research strategies and needs focused on environmental exposures and cancer. Specifically, the webinar series covers knowledge gaps and potential research opportunities, state-of-the-science, research needs such as tools and technologies, and understudied scientific areas (including contemporaneous/emerging exposures) related to the environment and cancer.

The 10,000 Families Study: A New CEECR Cohort to Study Cancer Risk Factors Across the Lifecourse

Date: **Wednesday, June 11, 2022, 2:00—3:00pm ET**

[Register here:](#) (advance registration is required)

The 10,000 Families Study is a new family-based cohort study designed to evaluate the shared genetic and environmental factors that influence health in families, particularly whether exposure to PFAS, glyphosate, and radon are associated with increased risk of blood cancers. The study is part of the Cohorts for Environmental Exposures and Cancer Risk (CEECR) consortium. In this webinar, researchers will describe ongoing community engagement, recruitment efforts, data collection, and return of results for the 10,000 Families Study. They will also share preliminary findings on PFAS and radon testing from the initial two years of the study.



Heather Nelson, PhD, MPH
Professor of Epidemiology
Associate Director,
Cancer Prevention and Control
Masonic Cancer Center
University of Minnesota



Jen Poynter, PhD, MPH
Professor of Pediatrics
Associate Director,
Community Outreach and
Engagement
Masonic Cancer Center
University of Minnesota

For more information on the *Environmental Epidemiology and Cancer Webinar Series*, please contact:

[Somdat Mahabir, PhD, MPH](#) Program Director, Environmental Epidemiology Branch mahabir@mail.nih.gov



Environmental Epidemiology and Cancer Webinar Series

COORDINATING CENTER CORNER

The CEECR Coordinating Center is here for you!

Our multidisciplinary team includes experts in breast cancer epidemiology (Trentham-Dietz), basic science including genetics (Bradfield), environmental health and applied public health (Malecki), toxicology (Bradfield), program evaluation, biostatistics (Gangnon, Hampton, Arroyo), and outreach/community engagement (Malecki, Warren Andersen), as well as mentoring and training (all) and research administration and logistical support (McGregor, Johnson, Wiesner).



Amy Trentham-Dietz, PhD, MS
Cancer Epidemiologist
trentham@wisc.edu

- Oversight for the CC and Steering Committee Representative
- Identifies common data elements to guide harmonization
- NCI Point of Contact



Kristen Malecki, PhD, MPH
Environmental Epidemiologist
kmalecki@uic.edu

- Identifies common data elements of early biomarkers
- Facilitates the Recruitment and Retention working group
- Supports resource sharing and manuscript publication



Julie McGregor
Research Administration
jmcgregor@wisc.edu

- Overall coordination of timelines, deliverables, dissemination, and the annual meeting
- NCI Point of Contact
- IRB, DUA, MTA



Hannah Johnson, MPH
Public Health Policy & Management
hkjohnson2@wisc.edu

- Identifies common data elements
- Maintains communications and contacts
- Coordinates meetings, manuscripts, and stakeholder engagement



Shaneda Warren Andersen, PhD, MS
Cancer Epidemiologist
snandersen@wisc.edu

- Identifies common data elements of cancer risk factors, resource sharing and manuscripts
- Community outreach and stakeholder engagement
- Health Equity Experience



Ronald Gangnon, PhD
Biostatistician
ronald@biostat.wisc.edu

- FAIR data sharing practices and external PIs access to CEECR data
- Guidance on statistical methodologies and analyses, and support of manuscripts and resource sharing



Chris Bradfield, PhD
Environmental Toxicologist
bradfield@oncology.wisc.edu

- Provides support for biospecimen best practices and manuscript publication



John Hampton, MS
Biostatistician
john.hampton@wisc.edu

- Supports data management and sharing between PIs
- Designs data entry, tracking, and standardization
- Submission of CEECR data to NIH



Natalia Arroyo, MPH
Data Scientist
narroyo@wisc.edu

- Observational Medical Outcomes Partnership (OMOP) data sharing and harmonization
- Co-lead cross-network data analysis projects
- Works with Geospatial Working Group and manuscripts



Katie Wiesner
Project Assistant
kkwiesner@wisc.edu

- Supports meeting logistics, newsletters, literature reviews, data collection, and analysis.
- Works on dissemination of research activities and findings.