

# THE CEECR CONSORTIUM NEWSLETTER

Winter 2025

Volume 3, Issue 1



SOUTHERN  
ENVIRONMENTAL  
HEALTH STUDY



Funded by the National Cancer Institute (NCI), and the National Institute of Environmental Health Sciences (NIEHS), NIH, DHHS



## Inside this issue...

Coordinating Center and Recruitment Updates	2
CEECCR in the Community	3-4
Research Spotlight	5
New to the Consortium, Publication Resources	6
Resources, Presentations, Webinars	7
Working Group Updates	8
NCI and NIEHS Team	9
Coordinating Center Corner	10

## CEECCR: The New Cohorts for Environmental Exposures and Cancer

**Risk** is a collaborative effort co-funded by the National Cancer Institute (NCI) and the National Institute of Environmental Health Sciences (NIEHS). CEECCR aims to support innovative scientific research in new prospective cohorts that address knowledge gaps in cancer etiology and carcinogenesis processes with a focus on environmental exposures.



## CEECR reaches 41,000 participants enrolled!

As of December 15, 2025, CEECR has reached over 41,601 participants enrolled. This includes participants from 24 states across the United States that have joined one of CEECR's four active cohort studies— 10KFS, MI-CARES, STRIVE, and SEHS.



CEECR is on Facebook!

You can follow our page here: [CEECR](#)

## Coordinating Center Updates



The **CEECR Annual Meeting** took place this year December 4-5, 2025 in Ann Arbor, MI at the University of Michigan, Ann Arbor - home base for the MI-CARES study team. Lots of laughs were shared at the meeting, in addition to all of the great collaborative paper ideas, projects, and strategies for advancing environmental exposures and cancer research! This year's meeting theme was **"Maximizing the Value of CEECR Research through Data, Collaboration, Linkages, and Continued Consortium and Participant Engagement."** During the one and a half day hybrid meeting, CEECR consortium members and guests joined to work together to overcome challenges surrounding recruitment and retention of study participants, strategized on how to advance collaborations and harmonization across CEECR cohorts, and built from the working groups and previous projects to date to work together on innovative science, papers, and other projects. The consortium is excited to work more with air pollution and water quality data. Also, using social determinants of health (SDOH) to learn more about the relationship between environmental exposures and cancer risk - SDOH includes factors like housing conditions, stress, neighborhood environment, and other factors that can impact health.



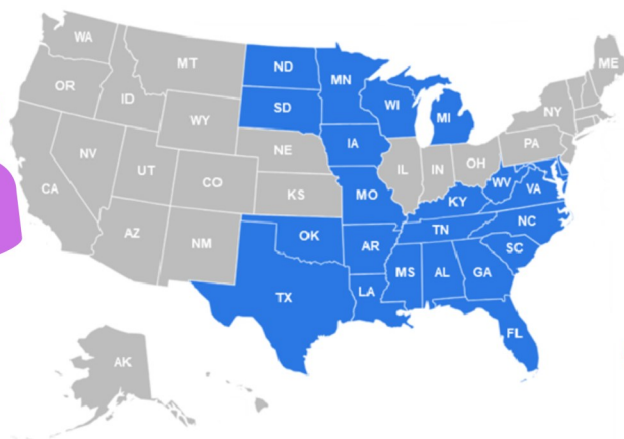
From left to right: Cathrine Hoyo (STRIVE), Alia Dada (MI-CARES), Kristen Malecki (CEECR CC), Valerie Dartey-Hayford (STRIVE), Somdat Mahabir (NCI), Dana Dolinoy (MI-CARES), Rena Jones (NCI)



## Who is in the new Cohorts for Environmental Exposures and Cancer Risk (CEECR)?



**4 out of 5** participants come from metro counties



**Over 41,601** participants joined between December 2021 and December 2025

Are you interested in learning more about which cohort is studying environmental exposures and cancer risk in your state? Check out our website to learn more about each of the CEECR cohorts by scanning the QR code below!



**1 in 4** participants identify as men



**3 out of 5** participants are younger than 50



# CEECR in the Community

## MI-CARES—The Michigan Cancer and Research on the Environment Study

The MI-CARES recruitment effort is focused on areas with a high environmental condition score, or areas where there are more environmental exposures than another area. One of the areas they have begun to work with is Tecumseh, MI where they have been connecting with public officials, planning community events and canvassing, creating specific ads, writing letters to faith community leaders, and working on email outreach. Tecumseh has a long history with the University of Michigan where there was a community-wide cohort study that was established and is still being studied today. MI-CARES is also looking to connect with first responders and teachers through connections with Neighbors United and engagement with union leaders. Neighbors United includes those impacted by or who have

lost someone to fire-fighting related cancers. The Michigan team also continues to deepen their connections with the Flint community through their pilot grant to study unusual cancer patterns.

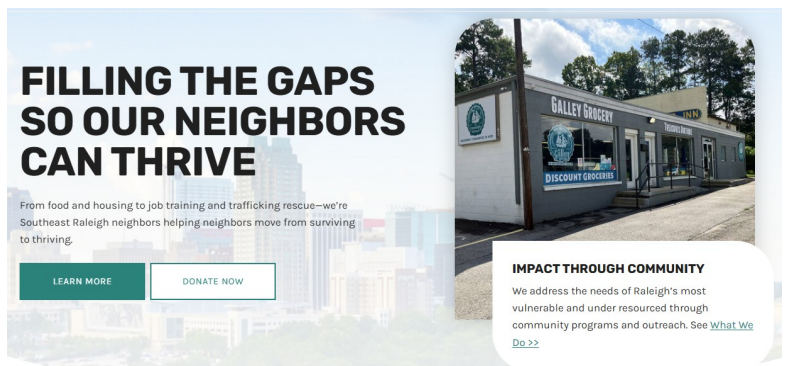


MI-CARES team members meet with Flint community members to talk about their concerns and inform their plan for launching a complementary grant study on addressing unusual cancer patterns in Michigan.

In November, they met with Flint community members to hear about their needs and community interests. They are working together to form a water questionnaire module that can be added to the base MI-CARES survey and would be more accurately expressive of Flint community members' experiences during the water crisis.

## STRIVE—The Southern Liver Health

**Study** In September, the STRIVE team attended a Men's Health Symposium hosted by one of their partner organizations [Ship Community Outreach Raleigh NC](#) | [Neighbors Helping Neighbors Thrive](#). The team shared information about STRIVE, and connected with community members. SHIP Outreach "addresses the needs of Raleigh's most vulnerable and under resourced through community programs and outreach." The STRIVE team hosted a meeting this fall with their External Advisory Board. They provided updates on STRIVE's progress and sought their expert guidance about participant engagement, building trust with communities and participants, and best practices for ensuring data and sample collection methods are accessible to all participants. The STRIVE NCSU team has an ongoing collaboration with the NC C-CAPE team to recruit participants in coastal NC. This past fall, they held a joint outreach event at NC Estuarium and they are looking forward to future work with their team! In October, the STRIVE team participated in Triangle Federation of the Blind's resource fair and they are excited to continue working with them in Spring 2026. STRIVE study staff have also attended events hosted



STRIVE is working with community groups like Ship Outreach to connect and strengthen their outreach efforts.



by study ambassadors and partner organizations, which included Kare4TheLot in Greenville, NC. Recruitment in Greenville area and the surrounding communities is picking up and they are looking forward to continuing these partnerships!



# CEECR in the Community

## 10KFS—The 10,000 Families Study



Dr. G Gopher completes the 10,000 Families Study Screener at the Minnesota State Fair

Members of the 10,000 Families Study (10KFS) team walked in the University of Minnesota Homecoming Parade in October! The 10KFS crew marched with a banner that invited people to join the 10KFS study as they donned t-shirts with the 10KFS study logo in University of Minnesota colors. The T-shirts and banner have QR codes that take people directly to the 10KFS screener to see if they are eligible to join the 10KFS study. In July, the 10KFS team met their Community Advisory Board (CAB) in person to do “Ripple Effect Mapping” (REM) to explore how 10KFS CAB activities were having a larger impact on CAB members and their



10KFS walking in the University of Minnesota Homecoming Parade

communities. REM is a way to capture how small interactions between individuals or within a team can lead to larger impacts on the team and the community. From these discussions, they found several common themes: that CAB members' voices and experiences felt valued, that there is an established trust and teamwork built between community and the researchers, and that CAB members felt a sense of ownership and involvement in the 10KFS research study. The 10KFS team shared this REM approach with the Recruitment and Retention Working Group in October. 10KFS staff continues to join in on community group meetings and other events to learn more from community members and to spread the word about the 10KFS. Since June, the 10KFS team has been busy meeting with Mujeres Latinas Unidas MN and the new Somali-led Inspire Change Clinic; participating in Penn Fest, hosting several booths as part of the GLI Liver symposium, Fiesta Latina, Unity in the Community, the Multicultural Festival, Beltrami County Fair, the Worthington International Festival, Women's Care & Mammogram Day, and the Deaf Equity Cookout event. They also recruited at the Minnesota State Fair at the end of summer as they have for several years. This year, “Dr. G Gopher” showed people how to fill out the study screener. 10KFS shares information and photos from these events and sharing photos on their Facebook page.



10KFS participated in *Light the Night* in September - an event organized by the Leukemia & Lymphoma Society

## SEHS—The Southern Environmental Health Study

SEHS was featured in the Louisville Courier Journal in July. The [article](#) “How a Louisville study uses silicone wristbands to determine environmental cancer risks” discussed how the SEHS study has study participants wear silicone wristbands to capture their environmental exposures throughout the week they are wearing them. After the week is up, the SEHS team is then able to identify exposures absorbed by the wristband in the lab. More information on how silicone wristbands can be used to study environmental exposures and cancer risk can be found in our infographic [here](#). Thank you to SEHS partners at Family Health Centers for helping to facilitate this great exposure for the study! [CEECR Members and Guests Discussed Community Outreach and Engagement Efforts during the CEECR Annual Meeting](#) At the December 2025 CEECR Annual Meeting, Clem Wilcox from the 10,000 Families Study lead a breakout group on discussion topics related to Community Outreach and Engagement efforts throughout CEECR. Attendees in-person and online brainstormed on innovation in outreach, evaluation and measurement tools and current issues. CEECR staff and community members had a chance to connect, share their experiences working in their communities and provided one another with available tools and strategies.



SEHS staff members recruiting at Nashville General Hospital's Hospital Week

We want to hear about what your team is doing in the community! Please share updates with Hannah at [hkjohnson2@wisc.edu](mailto:hkjohnson2@wisc.edu) to be featured in our next newsletter.



## New CEECR Publications!

See all CEECR  
publications here!



### Higher short-chain polyfluoroalkyl substances (PFAS) mixture levels were linked to elevated alanine aminotransferase (ALT) in

**STRIVE study participants.** The STRIVE Team has [published a paper](#) listing CEECR grant funding titled: *Short-chain per- and polyfluoroalkyl substances associate with elevated alanine aminotransferase: Cross-sectional analysis results from the STRIVE cohort*. STRIVE researchers looked at how chemicals in the environment called short and long-chain PFAS may be related to enzymes in the liver called ALT. ALT is an enzyme in the blood that when high can be a sign of liver damage or injury. High ALT can be a sign of fatty liver disease or early liver inflammation. The research team used data from the STRIVE cohort, which included blood samples from 378 adults aged 40-75 years from Georgia and North Carolina. They found that people with higher levels of short-chain PFAS in their blood also tended to have higher levels of ALT, which means that there could be a link between exposure to short-chain PFAS and liver damage. They did not see a link between long-chain PFAS mixtures and ALT levels. We should continue to monitor and limit our exposure to PFAS, including short-chain PFAS to help prevent liver injury. More research is needed to confirm these results and to understand the relationship between PFAS and liver health. **Citation:** Seo, B., Wang, H., Maguire, R., Liu, Y., Smith, B., Haller, K., Riggan, M., Conti, D. V., Lenz, H. J., Wegermann, K., Planchart, A., Roccaro, G., Miller, L. S., Muir, A., Murphy, S. K., Moon, A. M., Troester, M. A., Moylan, C. A., Schildkraut, J. M., Hoyo, C., ... Goodrich, J. A. (2025). Short-chain per- and polyfluoroalkyl substances associate with elevated alanine aminotransferase: Cross-sectional analysis results from the STRIVE cohort. *Environmental research*, 283, 122139. <https://doi.org/10.1016/j.envres.2025.122139>

### Weight perception drives personal care product use, influencing exposure to commonly used sunscreen chemical oxybenzone (BP3).

**MI-CARES** has [published a paper](#) listing CEECR grant funding titled: *Body dissatisfaction widens the racial disparities of Benzophenone-3, a chemical biomarker of personal care and consumer product usage*. Benzophenone-3 (BP3) is a common chemical found in products like sunscreen and makeup. Due to its ability to absorb and stabilize ultraviolet (UV) light, it is used as an ingredient to minimize damage from sun exposure. However, high amounts of BP3 in the body can be harmful. Studies have linked BP3 exposures to increased risks of breast and ovarian cancer. In this study, the researchers looked at how body dissatisfaction impacts levels of BP3 in the body. They used NHANES 2003-2016 data for 3,072 women in the US, including BP3 measurements in the body, self-reported race/ethnicity, and perceptions of body weight (whether they felt overweight or about the right weight). Body dissatisfaction was related to higher BP3 levels in Hispanic and non-White women. Body dissatisfaction was also linked to lower sunscreen use. This study tells us that women with body dissatisfaction are inadvertently exposing themselves to BP3, likely due to their desire to meet beauty standards and use of other beauty products that contain BP3 beyond just sunscreen. We still need more studies on motivation for personal care product use and impact on chemical exposures. Knowing more about our motivations can help us to create interventions that help us lower environmental exposures that increase our cancer risk. **Citation:** Nguyen, V. K., Zimmerman, S., Colacino, J., Jolliet, O., & Patel, C. J. (2025). Body dissatisfaction widens the racial disparities of Benzophenone-3, a chemical biomarker of personal care and consumer product usage. *Environment international*, 202, 109557. <https://doi.org/10.1016/j.envint.2025.109557>

### STRIVE researchers emphasize the need for more studies in large, prospective cohorts with follow up over time for advancing our understanding of hepatocellular carcinoma (HCC).

The STRIVE Team has [published a paper](#) listing CEECR grant funding titled: *Ubiquitous Environmental Exposures and Risk of Hepatocellular Carcinoma: A Narrative Review*. In this review, the study team focused on articles published in the last 3 years on polycyclic aromatic hydrocarbons (PAHs), per- and polyfluoroalkyl substances (PFAS), cadmium, and HCC, chronic liver disease or liver injury. The researchers found that these chemicals may harm the liver through different pathways in the body: they can damage a person's DNA, they can alter how the body handles fat in a way that harms the liver, and they create harmful stress on liver cells. In their review, they found that studies are often limited in terms of sample size and follow up. Therefore, in order to better understand the link between the three chemicals, liver disease, and liver cancer we would need to follow people throughout their lives to understand the connection between common chemicals and liver cancer. You can read more about PFAS in our CEECR infographic [PFAS Exposure and Cancer Risk](#). **Citation:** Abate, H. M., Bujnowski, D., Jowell, A., Moylan, C. A., Hoyo, C., & Wegermann, K. (2025). Ubiquitous Environmental Exposures and Risk of Hepatocellular Carcinoma: A Narrative Review. *Digestive diseases and sciences*, 10.1007/s10620-025-09212-7. Advance online publication. <https://doi.org/10.1007/s10620-025-09212-7>

### Neighborhood deprivation tied to lower colorectal cancer screening uptake. Members from the SEHS team and the CEECR Coordinating Center have

[published a paper](#) listing CEECR grant funding titled: *Lower Neighborhood-Level Socioeconomic Status Is Associated with Lower Colorectal Cancer Screening Uptake in the Southern Community Cohort Study*. Colorectal cancer is a type of cancer that starts in the colon or the rectum. Most colorectal cancers start as a growth on the inner lining of the colon or rectum. These growths are called polyps. Screening for these polyps can include colonoscopy or stool-based tests. With regular screening, colorectal cancer can often be prevented. However, many people do not get screened regularly. Financial resources, education, and where someone lives can affect someone's ability to get regular screening. This study used the neighborhood deprivation index (NDI) and data from the Southern Community Cohort Study to look at how neighborhood conditions - such as poverty, education levels, and employment - may affect screening for colorectal cancer. They found that people living in neighborhoods with the most economic disadvantages were also less likely to have been screened for colorectal cancer. This was true regardless of race, education, income, sex and insurance status. To reduce colorectal cancer in underserved communities, we need to address neighborhood-level challenges to getting screened. **Citation:** Giurini, L., Gangnon, R. E., Trentham-Dietz, A., Zheng, W., Lipworth, L., Murff, H. J., Steinwandel, M., Weiss, J., & Warren Andersen, S. (2025). Lower Neighborhood-Level Socioeconomic Status Is Associated with Lower Colorectal Cancer Screening Uptake in the Southern Community Cohort Study. *Cancer prevention research (Philadelphia, Pa.)*, 18(6), 355-363. <https://doi.org/10.1158/1940-6207.CAPR-24-0541>

All papers listing CEECR grant funding are listed on our [website](#)!

# Coordinating Center Publication Resources

## Infographics:

The CC continues to share and create infographics highlighting relevant topics to the CEECR consortium uploaded [here](#). The CC works with a communications team at the UW Cancer Center to provide this information to general audiences. Cohorts are welcome to use this resource as well as a way to communicate with their team and participants.



See all of our  
infographics here!

## Lay Abstracts:

The CC is continuing to create lay abstracts for publications citing CEECR funding, and they will be posted to the CEECR website [here](#) upon author approval.



See all of our  
lay abstracts here!

## New to the Consortium

### Alia Dada (MI-CARES)

Alia joined the MI-CARES team as a Research Area Specialist Associate, contributing her expertise through the CASCADE Lab within the Department of Epidemiology at the University of Michigan School of Public Health (U-M SPH). Alia completed her MPH in global epidemiology with a certificate in social epidemiology at U-M SPH. She is particularly interested in advancing health outcomes and exploring social determinants of health and has valuable experience engaging various populations. Through her role with MI-CARES, Alia is dedicated to supporting collaborative research efforts and advancing public health practice.



### Lifeng Li (CEECR Coordinating Center)

Lifeng Li is excited to join the CEECR Coordinating Center this year. Lifeng is the new Research Services Manager for Amy Trentham-Dietz's lab at University of Wisconsin-Madison. Lifeng is originally from China where she received her Bachelor of Medicine degree. From there, she moved to the United States with her family and pursued a Masters in Public Health (MPH) degree from the University of Michigan, Ann Arbor. Since that time, she has been working as a cancer epidemiologist at the Nebraska Cancer Registry at the Nebraska DHHS. Most recently, she worked as the Injury Epidemiology Surveillance Supervisor there. Lifeng is thrilled to meet everyone at the 2025 CEECR Annual Meeting at Ann Arbor, MI. She's looking forward to her first Wisconsin winter!

### Amy Schultz (CEECR Coordinating Center)

The CEECR Coordinating Center is welcoming Amy Schultz to the team. Amy previously worked on the Survey of the Health of Wisconsin (SHOW) study and works at the University of Wisconsin-Madison where she earned her PhD in Epidemiology and MS in Population Health Sciences. Her work focuses on (1) measuring cumulative and longitudinal environmental exposures across the life course, using spatial proxy associations to inform collection of personal wearable devices; and (2) examining the social, behavioral, and environmental factors associated with aging, cognitive functioning, and Alzheimer's Disease. Her most recent work has included characterizing PFAS and pesticide exposures in Wisconsin. Amy's interest in how one's environment shapes their health across their lifespan will be a great asset to CEECR.





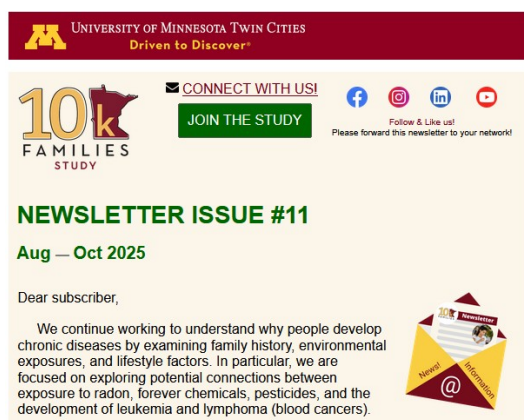
## Scientific Presentations

Kristen Malecki from the **CEECR Coordinating Center** represented CEECR at this year's National Institute of Environmental Health Sciences (NIEHS) annual meeting for the Environmental Health Sciences Core Centers (EHSCC). Kristen presented **"Utilizing PLACES to Characterize Recruitment for the Cohorts for Environmental Exposures and Cancer Risk"** during Science 3: **"Bridging Bench and Bedside: Environmental Contaminants and Cancer Across the Spectrum."** You can learn more about the PLACES data and explore an interactive map on the CDC's website [here](#). Martha Shrubsole from the **SEHS** study presented virtually at the Community Knowledge Exchange Session on October 28 for the University of Louisville Superfund Research Center (ULSRC). ULSRC supports research about environmental health impacts of volatile organic compounds (VOCs). Alison Mondul from the **MI-CARES** study team presented a [Flash Talk](#) at the August 2025 combined ISES-ISEE 2025 Conference on **"The Michigan Cancer and Research on the Environment Study (MI-CARES): the First 10,000 Participants."**



## Webinars & Other Resources

**10KFS** released their 11<sup>th</sup> [newsletter](#) for August through October 2025. The newsletter featured news from the CEECR 2024 Annual Meeting, a warm welcome to new 10KFS staff members, and a delicious bananas with caramel sauce recipe! The **STRIVE** study team has shared information on PFAS based on measurements of the levels of 25 different PFAS in the blood of the first 500 STRIVE study participants. A list of the PFAS they tested can be found on their study website [here](#) along with a comparison of **STRIVE** participants' averages to national levels for 6 types of PFAS: PFOA, PFNA, PFDA, PFHxS, PFHpS, and PFOS. **MI-CARES** hosted a webinar in September with guest Kathryn Barry, PhD, MPH, of the University of



### What has STRIVE measured?

We measured the levels of 25 different PFAS in the blood of the first 500 STRIVE participants.

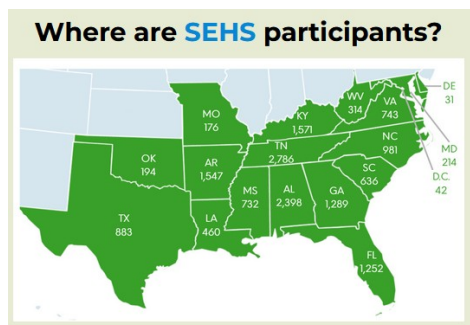
A list of those PFAS we tested can be found below:

PFBA	PFPeA	PFHxA	PFHpA	PFOA	PFNA	PFDA
PFUnA	PFDoA	HFPO-DA	PFBS	PFPeS	PFHxS	PFHpS
PFOS	4:2FTS	6:2FTS	8:2FTS	PFMPA	PFMBA	ADONA
PFESA	NFDHA	9CI-PF3ONS	11CI-PF3OIDS			

Out of these, the PFAS in **bolded** have been measured by the National Health and Nutrition Examination Survey (NHANES) which is sent out by the CDC (to learn more about the survey click [here](#)). This gives us a national average of Americans' PFAS blood levels.

Maryland School of Medicine to discuss the U.S. surgeon General's new warning issued for Alcohol and Cancer. A recording of the webinar can be found on the MI-CARES YouTube channel [here](#). **MI-CARES** also shared a new video on their YouTube channel to help walk participants through the process of using the blood sample collection kit for their study. **SEHS** has started to post updates on their enrollment totals by state to their study [website](#). Visitors to the homepage can see what states SEHS participants are coming from with the most enrollment currently coming from Alabama and Tennessee. **SEHS** has created a half page recruitment flyer that can be used in

addition to or in place of their brochures and flyers. The half page is meant to be smaller and more concise to provide information on the SEHS study and invite people to join.



### Cancer Rates are High in the South

Be One of 35,000 Voices Helping To Learn Why

#### WHO CAN JOIN?

This study is for you if:

- You have never had cancer
- You are between 40-70 years old
- You live in an eligible Southern state

Eligible Southern states: AL, AR, DE, FL, GA, KY, LA, MD, MS, MO, NC, OK, SC, TN, TX, VA, WV, Washington D.C.

#### WHAT IS THE SEHS?

We are looking for 35,000 adults to join a long-term study investigating the impacts of our environment on our health

- fill out a survey
- wear a wristband
- donate samples (optional)

Participants will receive \$20 for completing the survey and wearing the wristband. Participants may be asked to donate (optional):

- Saliva for \$5
- Blood and urine for \$20

#### HOW WILL YOU BENEFIT?

- Receive a payment between \$20-\$45 based on your participation
- Receive newsletters about study progress and results
- Help improve the health of your community

#### WHY THE SEHS?

It is important to participate in long-term cancer research even if you have never had cancer because healthy individuals help us to understand how cancer develops and to identify risk factors

#### HOW LONG IS THE SEHS?

It takes time to understand the causes of cancer. We hope that participants will participate in SEHS for many years. After joining, you will only need to update your information every few years.

#### JOIN TODAY!

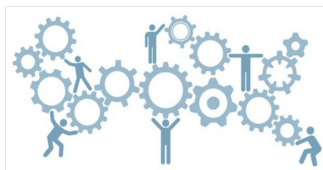
Learn more about the study and sign up today at [SEHStudy.org/info](#)  
Or call us toll-free at 855-710-9489

# CEECE Consortium Collaboration and Harmonization

## Harmonization Working Group

### *Core data elements for the consortium*

- The Harmonization working group reviewed additional SDOH measures and other questions that they could incorporate into their follow-up questionnaires.
- At the Annual Meeting, Amy Trentham-Dietz, MPI from the CEECR CC presented on all of the available tools the cohort studies can use in their collaborative efforts. Multiple resources were developed to educate CEECR members on potential areas for collaboration including a Table 1, a CEECR Collaborative Questionnaire Cross Check, and an updated comprehensive questionnaire grid.
- This year, the CC worked with the data science contacts at each cohort site to create a combined table of the sociodemographic characteristics of CEECR participants (referred to as “Table 1”).
- In August, the CC team also shared information with the CONNECT for Cancer Prevention study team on related items in the CEECR questionnaires to harmonize modules the CONNECT team is developing.



## Recruitment and Retention Working Group

### *Sharing best practices, successes and challenges*

- This year, the Recruitment and Retention (R & R) working group decided to focus their efforts on growth points presented during the 2024 CEECR Annual Meeting, which included recruitment of more men, rural participants, and new ways to recruit certain populations that may be harder to identify or less engaged in research.
- Each cohort presented on their R & R lessons learned in the UG3 phase and, now in the UH3 phase, changes they have made to their recruitment and retention strategies. To support these efforts, consortium members also received feedback on R & R challenges they continue to face during the 2025 Annual Meeting, and met to discuss with each other.

## Geospatial Working Group

### *Creating a geospatial protocol for the consortium*

- The Geospatial working group this year focused on the methods for our collaborative project on air pollution, social determinants of health (SDOH) and CEECR. With support from the CC, the group was asked to review data linkages the consortium could leverage for collaborative manuscripts or other projects.
- The consortium is excited to incorporate more geospatial linkage work after discussions at the Annual Meeting. One idea the group has been talking about is using the CDC PLACES dataset along with some of the survey data from CEECR participants to see how CEECR compares with the United States and with the PLACES data. Smoking, Obesity, and alcohol consumption are all being asked in the surveys and can be explored along side the PLACES dataset and several other publicly available datasets. All 4 CEECR cohorts have agreed to collaborate on an air pollution paper, which will utilize data from each of their studies.

## Steering Committee

### *Guiding the direction of the consortium*

- In July 2025, Steering Committee members identified a need to add information to the CEECR Publication Policy on abstracts, posters, and presentations. The Steering Committee approved the updated Data Sharing and Publication Policies in October 2025. The revised and approved policies are shared on the consortium SharePoint site hosted at UW-Madison and on the CEECR public website. Consortium members have a procedure for ensuring transparency in collaborative efforts so that all interested individuals have opportunities to participate.

## Wristbands and Biospecimens

- The Biospecimens and Wristbands working group this year focused on the collaborative wristband project, PFAS work being done in the CEECR Cohorts, PFAS work being done by our collaborators and external experts, potential collaborations, and mixed-methods design. The CC supported these efforts by inviting speakers to present to the group on PFAS analysis considerations and methods, work being done already in CEECR on PFAS, and updating the comprehensive biospecimens and materials spreadsheet that includes all the cohort protocols for their blood, urine, saliva, and wristbands collected from participants as well as the wristbands project protocol.

## Mark your Calendars

### **Steering Committee**

First Monday of each month at 2pm EST: Next meeting is January 5, 2026

### **Notable Conference in 2026**

- > AACR (American Association for Cancer Research)  
April 17-22, 2026
- > Global Exposome Summit  
April 27-29, 2026
- > ISEE (International Society of Exposure Science)  
August 30-September 2, 2026
- > APHA (American Public Health Association)  
November 1-4, 2026



# NCI and NIEHS Team

**Somdat Mahabir, PhD, MPH**

NCI Lead, Program Director  
Environmental Epidemiology Branch  
Epidemiology and Genomics Research Program, NCI

**Curt DellaValle, PhD, MPH**

Program Director  
Environmental Epidemiology Branch  
Epidemiology and Genomics Research Program, NCI

**Tram Kim Lam, PhD, MPH**

Branch Chief  
Environmental Epidemiology Branch  
Epidemiology and Genomics Research Program, NCI

**Abee Boyles, PhD**

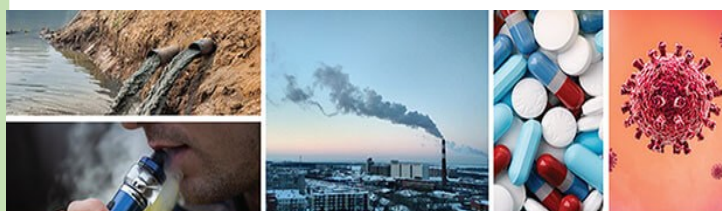
Program Director  
Population Health Branch  
Division of Extramural Research and Training, NIEHS

**Behnoosh Momin, DrPH, MS, MPH**

Program Director  
Environmental Epidemiology Branch  
Epidemiology and Genomics Research Program, NCI

## The CEECR Cohorts presented at NCI's Environmental Epidemiology and Cancer Webinar Series

**Purpose:** The Environmental Epidemiology and Cancer [webinar series](#) highlights novel cancer research strategies and needs focused on environmental exposures and cancer. Specifically, the webinar series covers knowledge gaps and potential research opportunities, state-of-the-science, research needs such as tools and technologies, and understudied scientific areas (including contemporaneous/emerging exposures) related to the environment and cancer.



### Environmental Epidemiology and Cancer Webinar Series

This year, each cohort had the opportunity to present information about their cohort and answer audience questions.

## NCI Mission

"NCI leads, conducts, and supports cancer research across the nation to advance scientific knowledge and help all people live longer, healthier lives."

"The [Environmental Epidemiology Branch](#) in NCI's Epidemiology and Genomics Research Program promotes and supports epidemiologic research on modifiable risk factors and cancer to inform and advance the prevention and control of cancer."

## NIEHS Mission and Vision

"The mission of NIEHS is to research how the environment affects biological systems across the lifespan and to translate this knowledge to reduce disease and promote human health. The vision of NIEHS is to provide leadership for innovative research that improves the health of people and communities."

"The [Population Health Branch \(PHB\)](#) seeks to improve environmental public health across the lifespan through support of fundamental, epidemiological, social science and community engaged research projects and programs. [Their] goal is to stimulate translation of fundamental research findings into public health including intervention and prevention strategies."

# COORDINATING CENTER CORNER

*The CEECR Coordinating Center is here for you!*

Our multidisciplinary team includes experts in breast cancer epidemiology (Trentham-Dietz), basic science including genetics (Bradfield), environmental health and applied public health (Malecki), toxicology (Bradfield), program evaluation, epidemiology (Schultz), biostatistics (Gangnon, Arroyo), and outreach/community engagement (Malecki, Warren Andersen), as well as mentoring and training (all) and research administration and logistical support (Li, Johnson).



**Amy Trentham-Dietz, PhD, MS**  
**Cancer Epidemiologist**  
trentham@wisc.edu

- Oversight for the CC and Steering Committee Representative
- Identifies common data elements to guide harmonization
- NCI Point of Contact



**Kristen Malecki, PhD, MPH**  
**Environmental Epidemiologist**  
kmalecki@uic.edu

- Identifies common data elements of early biomarkers
- Facilitates the Recruitment and Retention working group
- Supports resource sharing and manuscript publication



**Lifeng Li**  
**Research Services Manager**  
lli678@wisc.edu

- Overall coordination of timelines, deliverables, dissemination, and the annual meeting
- NCI Point of Contact
- IRB, DUA, MTA



**Hannah Johnson, MPH**  
**Public Health Policy & Management**  
hkjohnson2@wisc.edu

- Identifies common data elements
- Maintains communications and contacts
- Coordinates meetings, manuscripts, and stakeholder engagement



**Amy Schultz, PhD, MS**  
**Epidemiologist**  
aaschultz4@wisc.edu

- Guidance on geospatial and epidemiological methodologies and analyses, and support of manuscripts
- Provides support for SDOH work



**Shaneda Warren Andersen, PhD, MS**  
**Cancer Epidemiologist**  
snandersen@wisc.edu

- Identifies common data elements of cancer risk factors, resource sharing and manuscripts
- Community outreach and stakeholder engagement
- Health Equity Experience



**Ronald Gangnon, PhD**  
**Biostatistician**  
ronald@biostat.wisc.edu

- FAIR data sharing practices and external PIs access to CEECR data
- Guidance on statistical methodologies and analyses, and support of manuscripts and resource sharing



**Chris Bradfield, PhD**  
**Environmental Toxicologist**  
bradfield@oncology.wisc.edu

- Provides support for biospecimen best practices and manuscript publication



**Natalia Arroyo, MPH**  
**Data Scientist**  
narroyo@wisc.edu

- Observational Medical Outcomes Partnership (OMOP) data sharing and harmonization
- Co-lead cross-network data analysis projects
- Works with Geospatial Working Group and manuscripts

## **Congratulations and send offs to John Hampton, Katie Wiesner, and Julie McGregor!**

- Katie graduated from the University of Wisconsin-Madison School of Medicine and Public Health this past May with a Masters of Science in Epidemiology. Congratulations Katie! Thank you for all of your help at the Coordinating Center and best of luck in your future career!
- John retired in October after working as the head biostatistician in Dr. Trentham-Dietz's lab since 2000! Thank you John for all of your work in CEECR and in support of the research team!
- Julie also retired this November after serving as the Research Program Manager for Dr. Trentham-Dietz's lab since 2004! Thank you Julie for guiding and training all of those who have come in and out of the research team throughout the years!